



Netfee *Check All Users Traffic*

With the development of the Internet, more and more companies, associations and schools have connected their intranet with Internet. It provides an easy way for Communicating with external departments. However, they have to face many administration problems such as how to control the time usage, traffic usage and websites visited.

Integrated with popular firewall systems (ISA server etc.), Netfee can do Usage Analysis, Reporting, and Performance management. It consists of a Analysis module, charge module and reporting module.

Netfee Analysis the firewall's log files, then write the result into database. The administrator can monitor the Internet useage (Bytes, Time, URLs etc) of every user at realtime. And base on the usage of Bytes and time, Netfee can calculate the user's fee to pay.

Integrated with Microsoft Active Directory Service, Netfee supports managing of users and departments fully.

Product features ...

1. User /department administration

Integrated with Microsoft Active Directory Service to manage users. Besides, set different limitation for different users. These limitations include Bytes limit (by month), Time limit (by month), Bytes total limit, Time total limit and Expire date limit etc.

2. Support various charge mode

Can calculate Fee by Bytes received, by Bytes total or by Time used. User can prepay certain fee. System would terminate its rights of connecting to the Internet until prepaid fee runs out.

3. Run as service

Can be run without login as service.

4. Support many firewall products

Support ISA Server, TMG server 2010, CSM proxy, WinRoute, WinProxy etc.

5. Support data archive

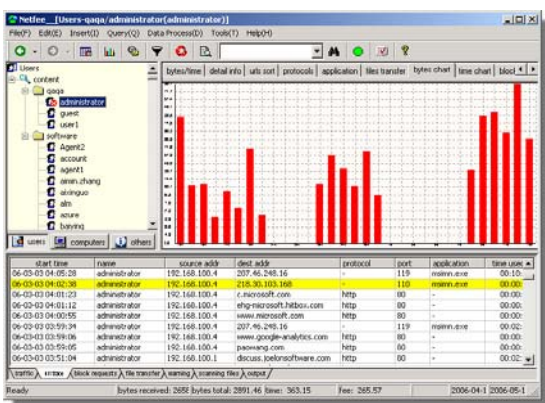
Archive data every month, So can query previous information of users.

6. Data Filter

Can setup the rules to specify what type data can be analyzed. For example: Don't analyze the data with Port be equal 445.

7. Trace and sort websites

Can query the information of websites visited by user/department, and sort them by the visited hints, bytes or time used.



8. Real time user information

Can monitor user state at real time.

9. Display used protocols

Display protocols used by user in details.

10. Display files Transferred.

Display files downloaded or upload by user in details.

11. Warn

Warn when some special recorders appeared.

12. Report service

Can create report in Excel or HTML format automatically.

13. Web query

User can query the status.

14. Bound user with IP address

Constrain user to use fixed IP address.

15. Backup and restore information

System can backup user information duly.

16. Data Chart

Output the chart of user states.

17. Run on every computer in an intranet

Administrator can monitor the network states on every computers.

18. Support SQL Server & SQL Server express

Can save data into SQL server or SQL server express

19. Cross query

Can realize Cross query between user and computer.

20. Support firewall array

Can monitor multiple firewalls in firewall array.

Customers voice ...

"**Netfee** helps us do some summaries of the time, traffic usage and charge the fee. It can give us a monthly report as the evidence of internal account. In this case, all departments can share the charge correctly. And it does help us estimate the internal benefits."

"**Because** the network band is limited, we must limit the traffic and time usage of some people and limit to download a lot of useless files. Netfee can do it very well. You can limit not only the total time and traffic but also the time and traffic in one month. The same limit rules can also work on the department. All these limit job can work automatically if you configure the system correctly."

"**As** a network administrator, I do not hope some staff can access Internet at any computer. so I need limit each person to use one or several computers. Netfee can satisfy my request. It can bind one staff man with a static IP address. Once someone accesses Internet by using an illegal computer, Netfee can disable the user's authorization to access Internet. This function does do a lot of help for us. "

System requirements

- ISA Server(2000/200/2006), TMG server 2010, CSM_Proxy WinRoute, WinProxy etc.
- Windows NT 4.0 (Service Pack 5) or Windows 2000 Server(Service Pack 2). or Windows 2003 Server(Service Pack 1). or Windows 2008 Server(X86/x64).
- Microsoft Data Access Components (MDAC) 2.5
- SQL server 2000 or SQL server express.
- Pentium II 300 CPU or higher
- 64 MB (128 MB for Windows 2000/XP) of RAM
- 500 MB of free HDD space

Netstar NetWork Technology Inc.

Address: 29 XueYuan Lu, HaiDian District, Beijing 100083, China

Phone: 86-10-82331909

Http://www.netfeesoftware.com

Email: sales@netfeesoftware.com