

Installation Guide

Netstar NetWork Technology Inc

1 Confirm the settings of system

- ⊘ Check whether system fulfills the basic requirements. NetFee can not be installed until all required software and hardware are installed and run successfully. Otherwise, it can not be installed successfully.

1.1. Install MDAC

For Windows NT 4, MDAC2.5 (sp2) should be installed. It can be downloaded from: http://www.microsoft.com/data/download_25SP2.htm

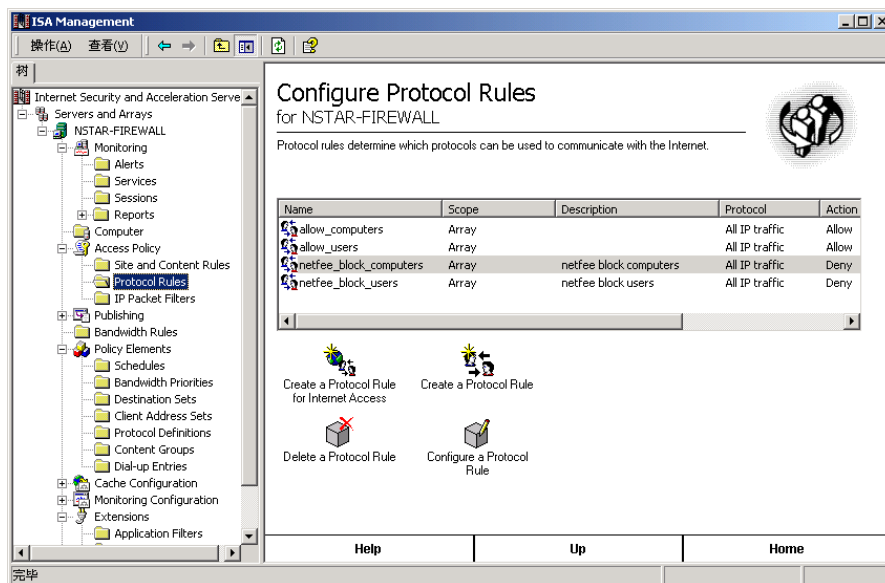
- ⊘ If run on Window 2000(2003) Server (SP2), it has no need to download MDAC. (MDAC has been integrated).

1.2. Settings Of Firewall

It is need to do some settings for firewall to fulfill user(computer) administration.

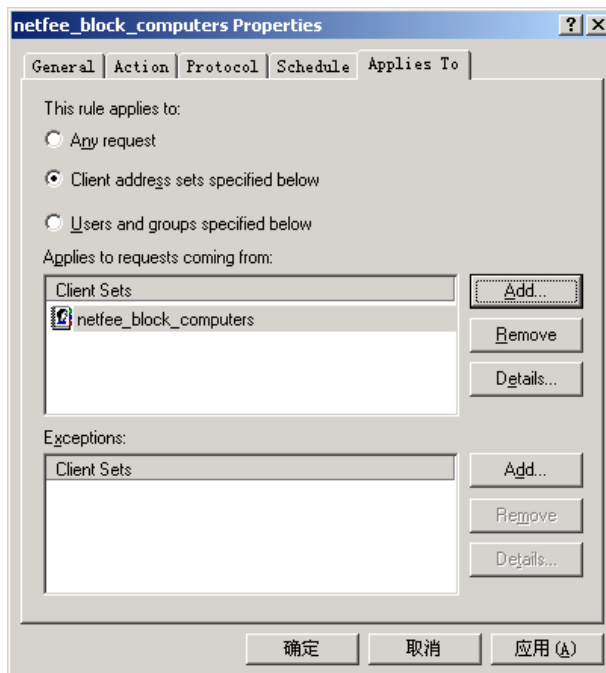
1.2.1 ISA Server 2000

Run "ISA Server 2000 mangmenet".

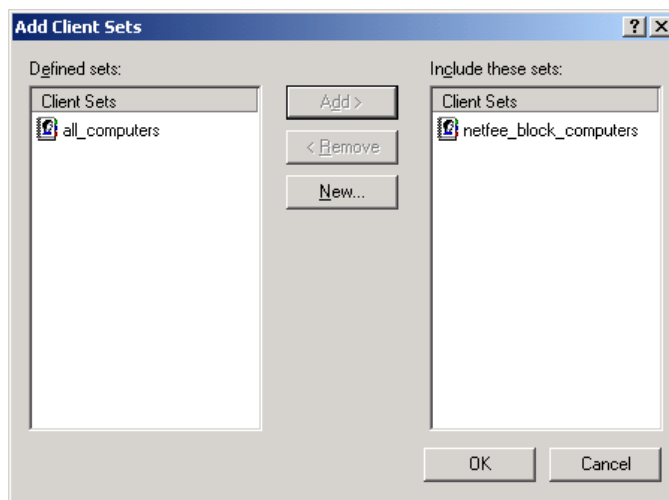


Choose "Access Policy / Protocol Rule", the two rules of "netfee_block_users" and "netfee_block_computers" are added by netfee.

Select "netfee_block_computers", and run "Configure a Protocol Rule".

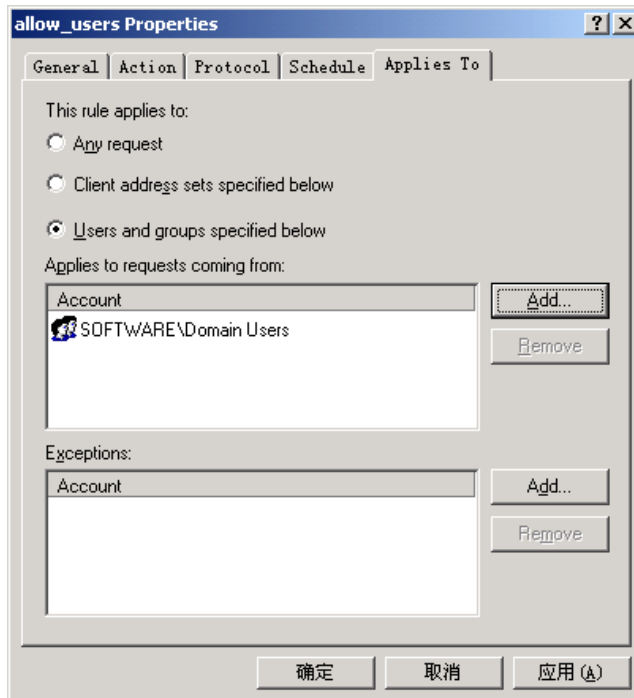


Click "Add" button, add "netfee_block_computers" from "Defined sets" to "Include these sets".



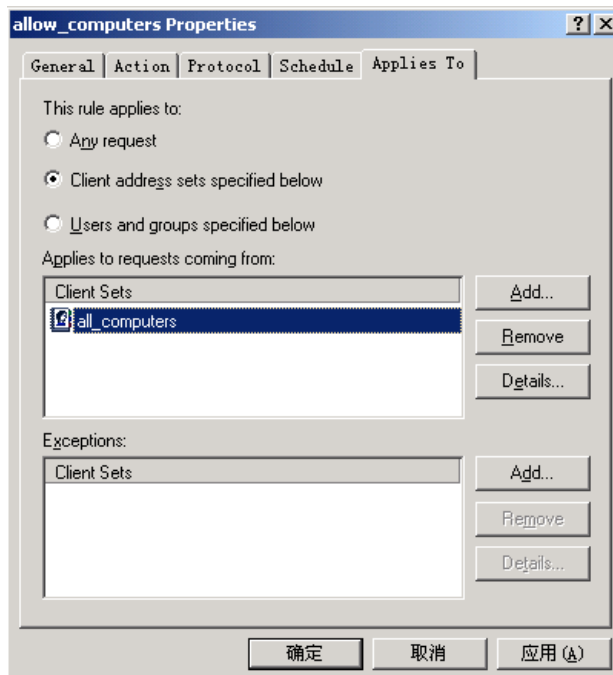
1.2.1.1 Admin by user E

add Protocol Rule in "Access Policy/Protocol Rule". Select "Users and groups specified below" in "Applies To" and add users into list "Applies to request coming from".



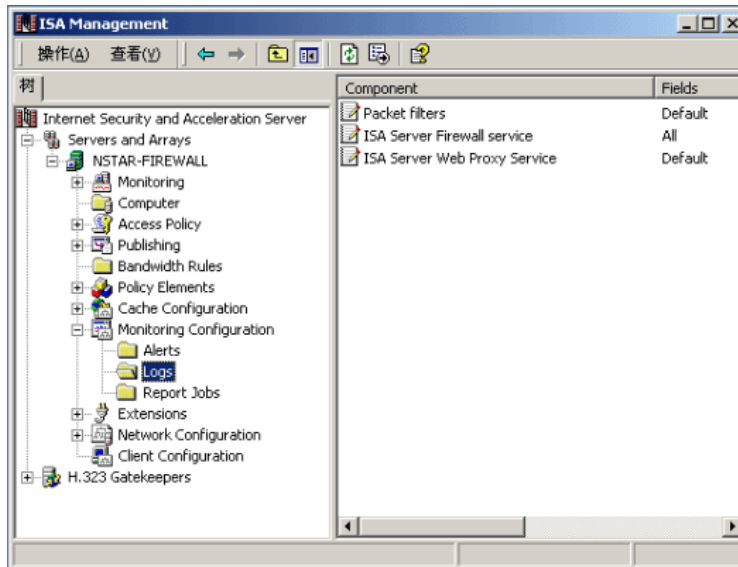
1.2.1.2 Admin by computers E

add Protocol Rule in "Access Policy/Protocol Rule". Select "Client address set specified below" in "Applies To" and add computers into list "Applies to request coming from".



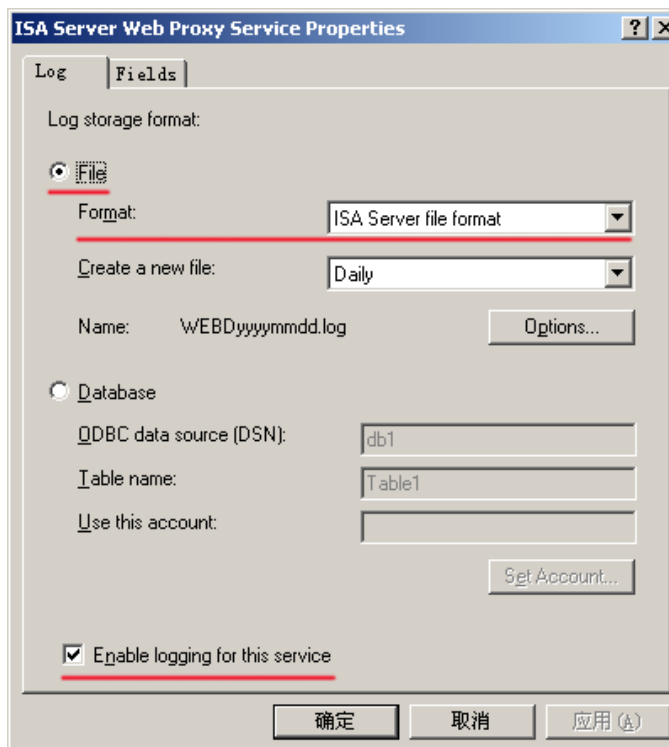
1.2.1.3 Log settings

Select "Monitoring Configuration/Logs".



Select "ISA Server format" or "W3C extended log file format" as Format of Web Proxy, Firewall and Packet filter.

⚠ For Netfee for ISA server enterprise, must select "ISA Server format" as log file format. E



Follow Fields should be included in Log files

● **Web Proxy Service:**

Client
Client user name
Date
Time
Destination name
Destination port
Processing time
Bytes sent
Bytes received
Protocol name
Object name

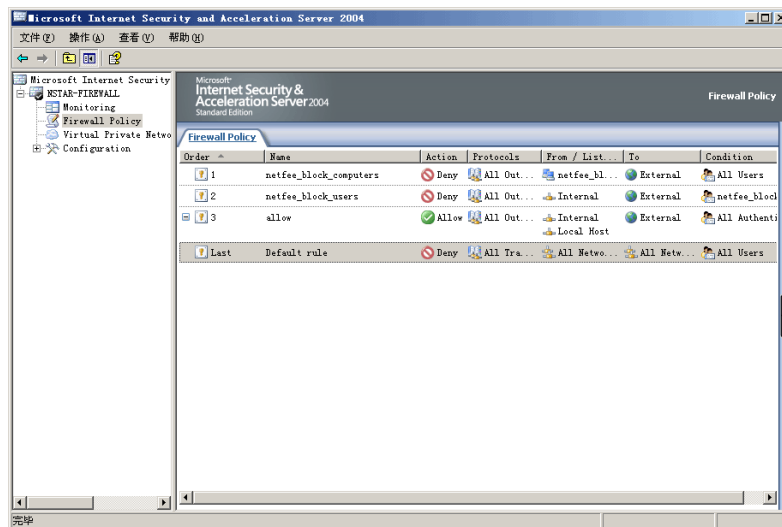
● **Firewall service:**

Client IP
Client user name
Client agent
Date
Time
Destination IP
Destination port
Processing time
Bytes sent
Bytes received

1.2.2 ISA Server 2004

1.2.2.1 Netfee policy

Run "ISA Server Management", select "Firewall policy".



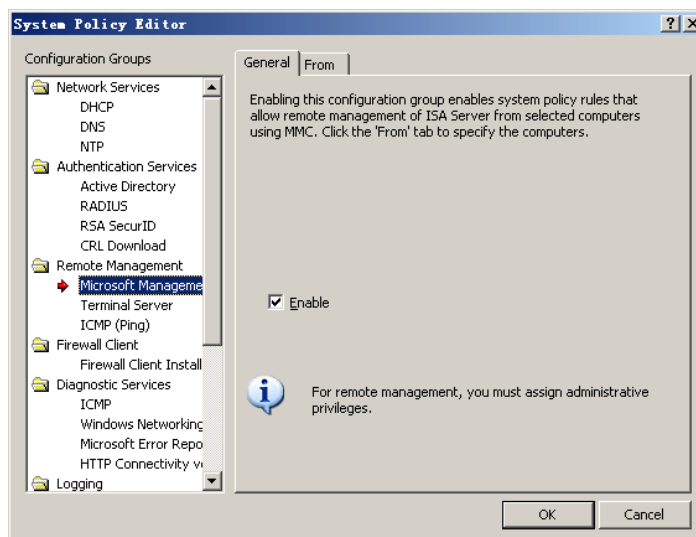
⊘ "netfee_block_users" and "netfee_block_computers" are rules added by netfee.

⚠ **The two rules must be at the top position of rule list.**

1.2.2.2 Remote management ⚠

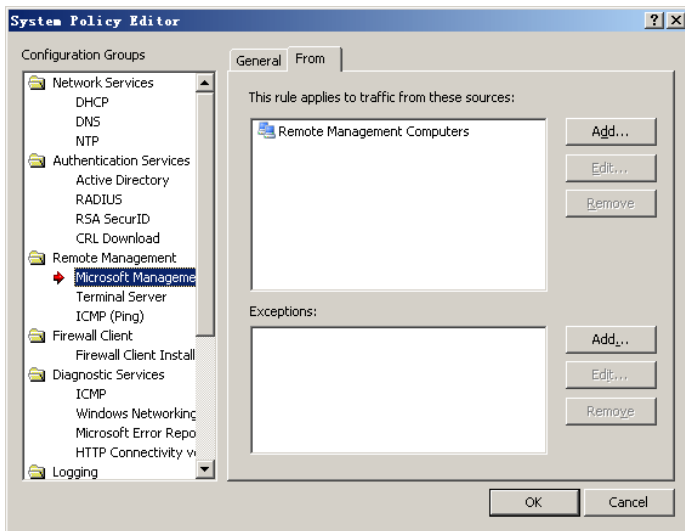
Netfee can run at local or at remote computer. When Netfee running at remote computer, need to do some settings to ISA server.

Right-click on "Firewall Policy", run "Edit System Policy". Then a dialog appear as follow:

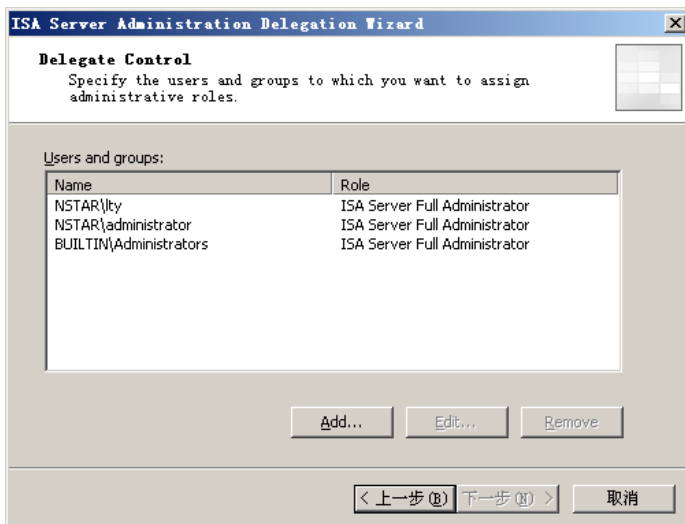


Choose "Remote Management/Microsoft Management Console", put a tick in the checkbox in this option to enable it.

In the **FROM** tab you can specify one or more computers for which you would like to enable Remote Administration from.

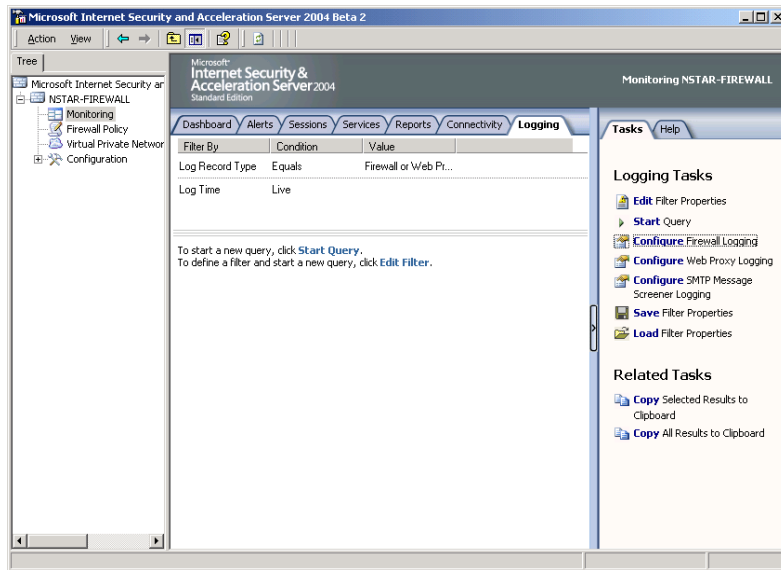


In the "Configuration/General" node choose "Administration Delegation". From there you can add or edit your firewall administrators.



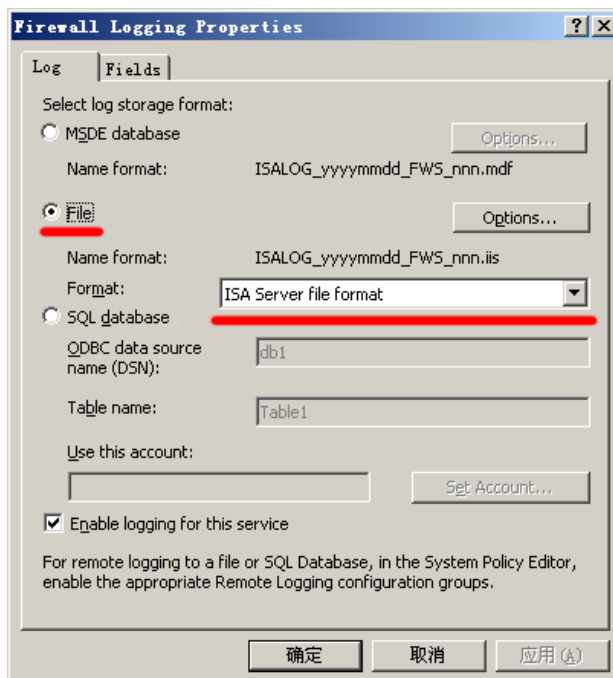
1.2.2.3 Logs

Click on "Monitoring", Select "Configure Firewall Logging".



then appears a dialog. Select "**ISA Server file format**" or "**W3C extended log file format**" as the format of log files of Firewall.

⊘ For Netfee for ISA server enterprise, must select "ISA Server format" as log file format. E



Set Web Proxy logging format as above.

Follow Fields should be included in Log files

- **Web Proxy Service:**

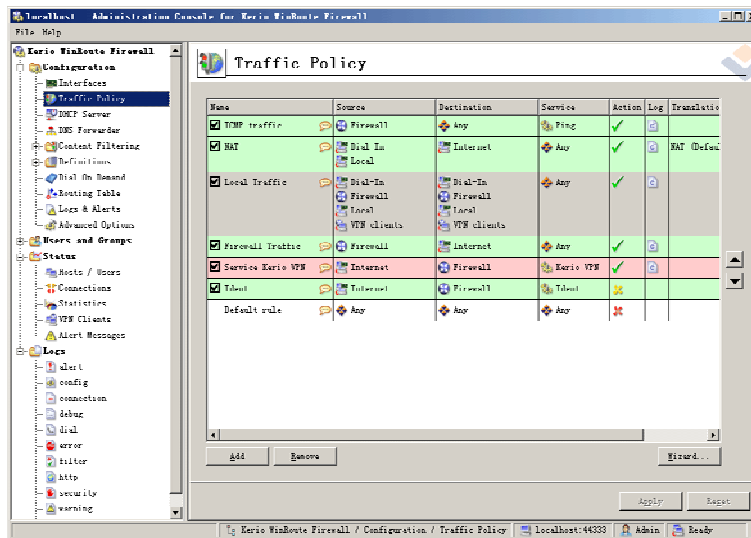
- Client IP
- Client user name
- Date
- Time
- Destination name
- Destination port
- Processing time
- Bytes sent
- Bytes received
- Protocol name
- Object name

- **Firewall service:**

- Date
- Time
- Source
- Destination
- Result code
- Bytes sent
- Bytes received
- Connection time
- Client user name
- Client agent

1.2.3 WinRoute 6.0

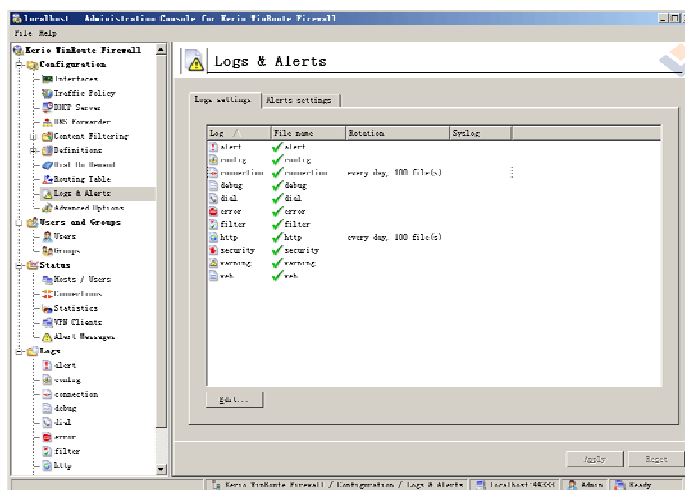
At "Administration console", select "Configuration/Traffic policy".



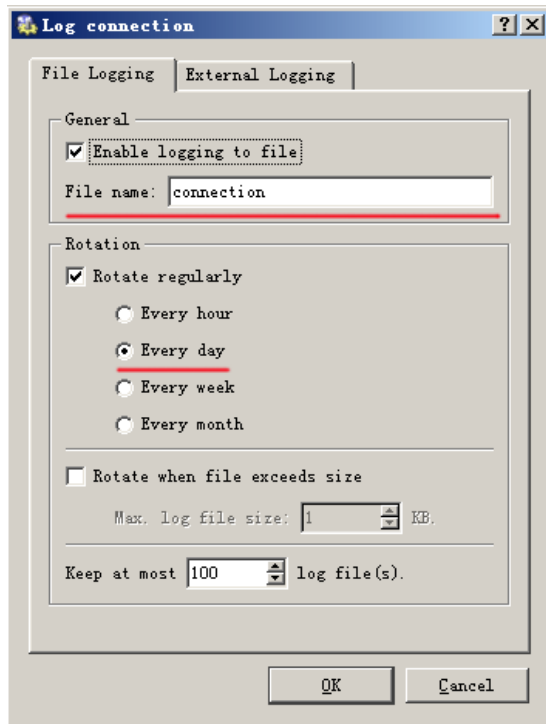
Edit each rules,run "Log matching connections" to produce logs.



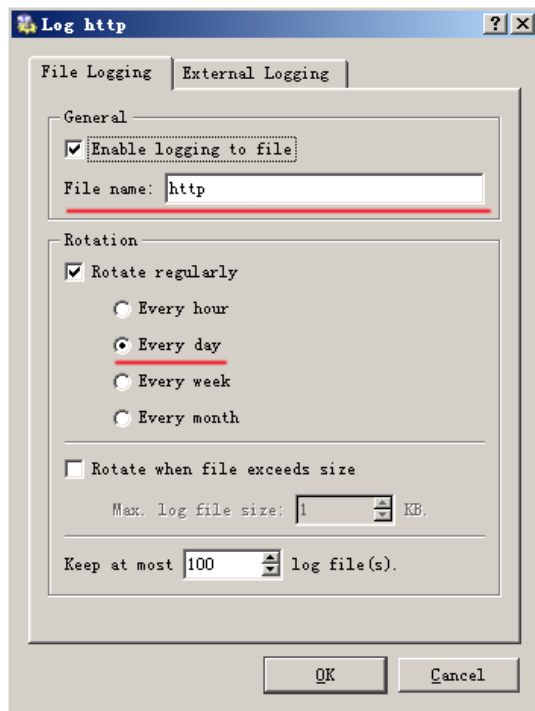
At "Administration console",Select "Configuration / Logs & Alerts / Logs settings".



Edit "Connection" settings. Select "Enable logging to file", and fill "File name" with "connection". Set "Rotation/Rotate regularly" to "Every day".

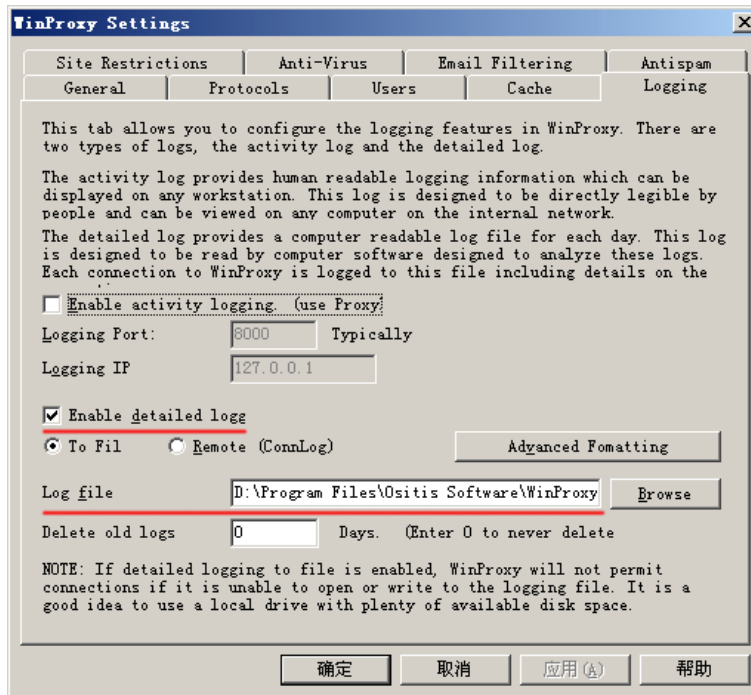


Edit "Http" settings. Select "Enable logging to file", and fill "File name" with "http". Set "Rotation/Rotate regularly" to "Every day".



1.2.4 WinProxy 5.1

Run "File / Settings / Logging", select "Enable detailed logging".



2 Installation

2.1 Install ISA server Management

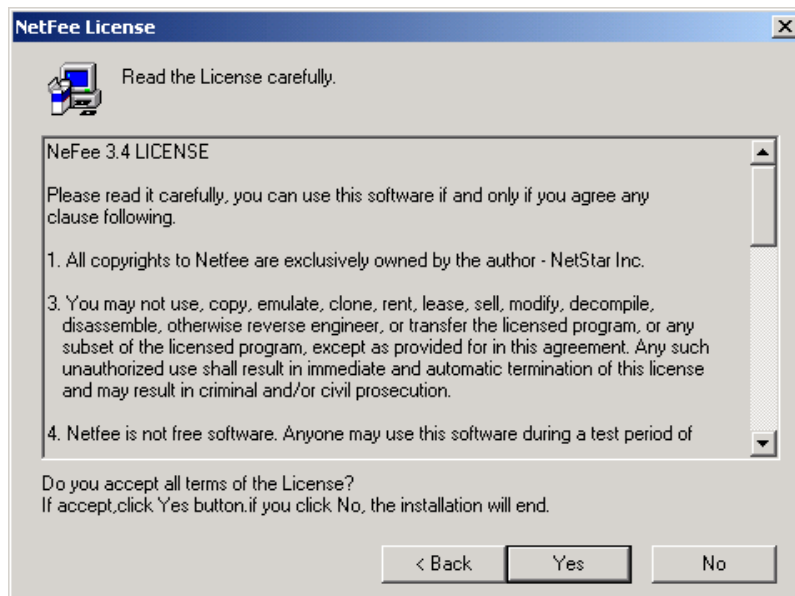
Netfee can run at local or at remote computer. When Netfee running at remote computer, need to install ISA server Management at the computer running netfee.

Firstly you should configured firewall for remote administration. Then can install the tools onto the computer to netfee. To do this we use the ISA Server CD. Just run the setup the usual way on the local computer, however, when you get to the menu options you should choose "Custom Setup". In the Custom Setup you should choose only the ISA Server Management and hit "Next". The necessary files will be installed and you will be on your way to remote admin.

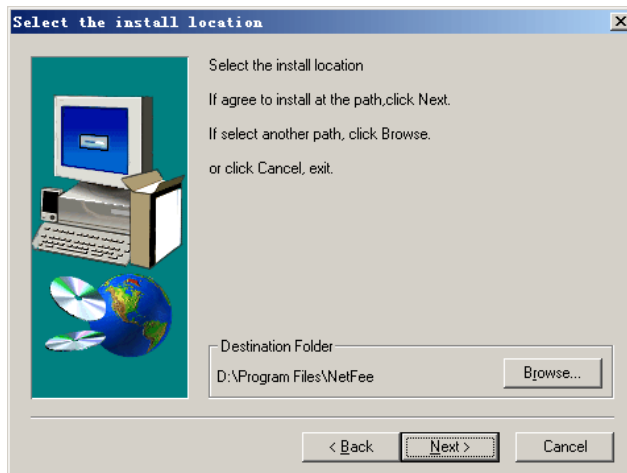
2.2 Install Netfee

Run Netfee.exe in install disk

First License agreement appears, if you accept the clauses listed in it, click "**Yes**", otherwise, click "**No**", exit.

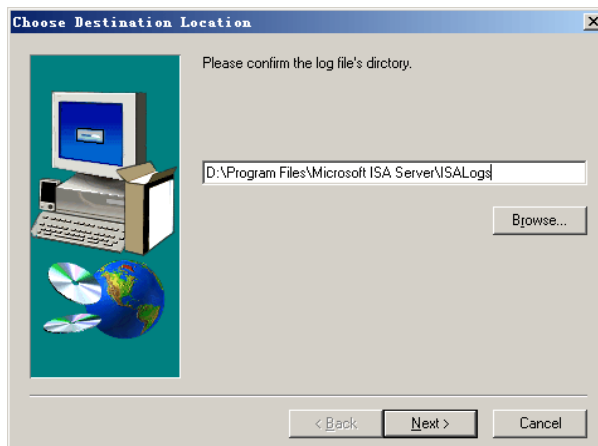


Then select the install location of NetFee, click "**next**"

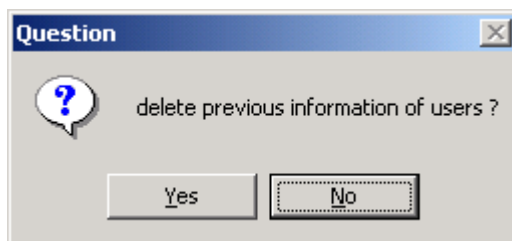


Then, display progress bar of installation:

System would check the location firewall logs automatically. Confirm the correction of log files; click "**next**", Installation continues.



If it is not installed for the first time, system will ask you "whether delete previous user information"

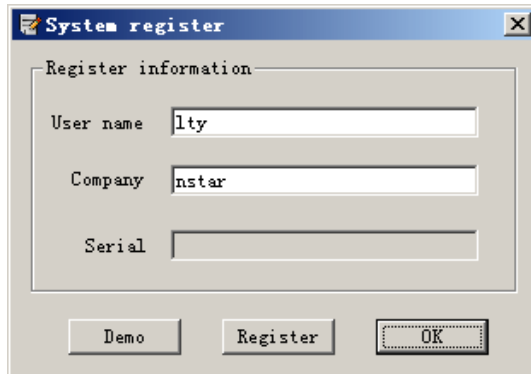


- Select "NO", restore all former user information.
- Select "YES", delete all former user information.

In that case, after finish installation and Start NetFee, run "**File/Restore user information**" to restore user information backup previously.

⊘ If install new version, need to delete previous information of users. should select "Yes".

Then, system registry window appears. If you want use the DEMO edition of NetFee, Click "DEMO"



If you are a legal user, click "**register**", "System register" window appears. Input your register information.

For DEMO edition, period of validity is 30 days (from installation).

After installation finished, you can select run immediately. You also can run "**Start/programs/NetFee/NetFee**" for the first use.

After later computer starting, NetFee run automatically. And an icon shows in right corner inferior department of screen.



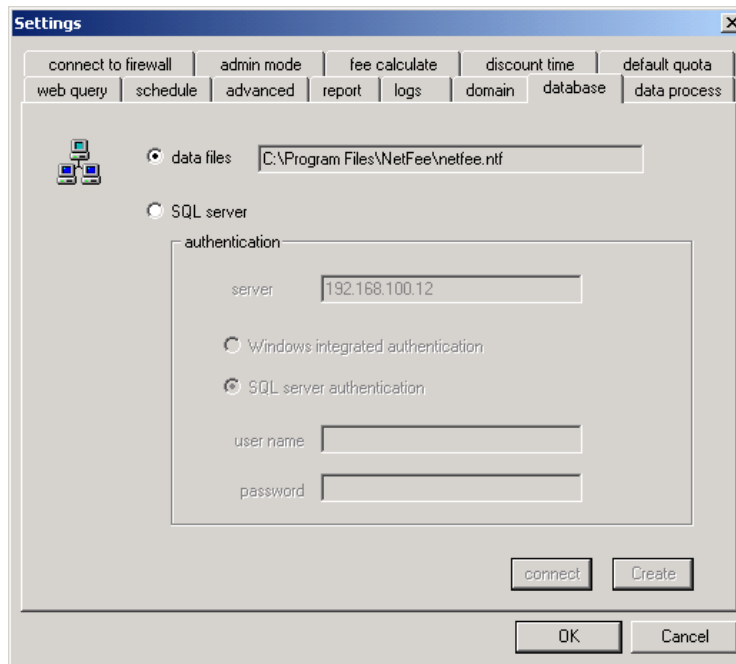
3 Initial running the system

3.1 Connect database

When run netfee, system will connect database automatically. The default database is data file - **netfee.ntf** (at ../programe files/netfee).

P E If you want to select "SQL server" as database, you should create database firstly.

Run "**Tools/Settings/Database**", fill in the address of SQL server, user name and password, then click "**Create**".

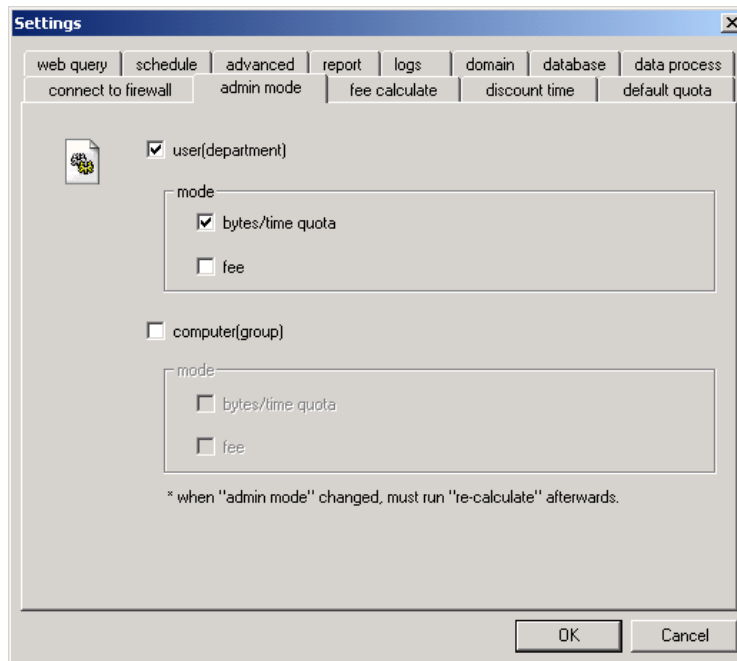


⊘ The user to create database must have "Create database" priority to the SQL server.

After database be created, you can specify another user to connect database. The user doesn't have to own the "Create database" priority.

3.2 Select admin mode

You can select the mode to admin users and computers. Refer to "**6.2 Admin mode**".



3.3 Add department (group) and user(computer)

"Add user", refers to "**7.1.1 Add user**".

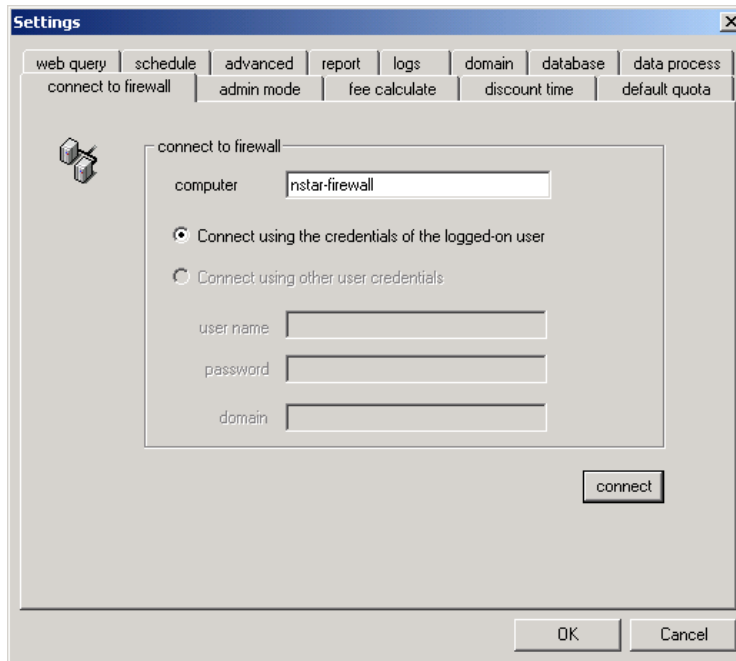
"Add department", refers to "**7.2.1 Add department**".

"Add computer", refers to "**8.1.1 Add computer**".



"Add group", refers to "**8.2.1 Add group**".

3.4 Connect to firewall

Netfee can run at local or at remote computer. When Netfee running at remote computer, need to connect to remote ISA server.
Run "Tools/Settings/Connect to firewall".

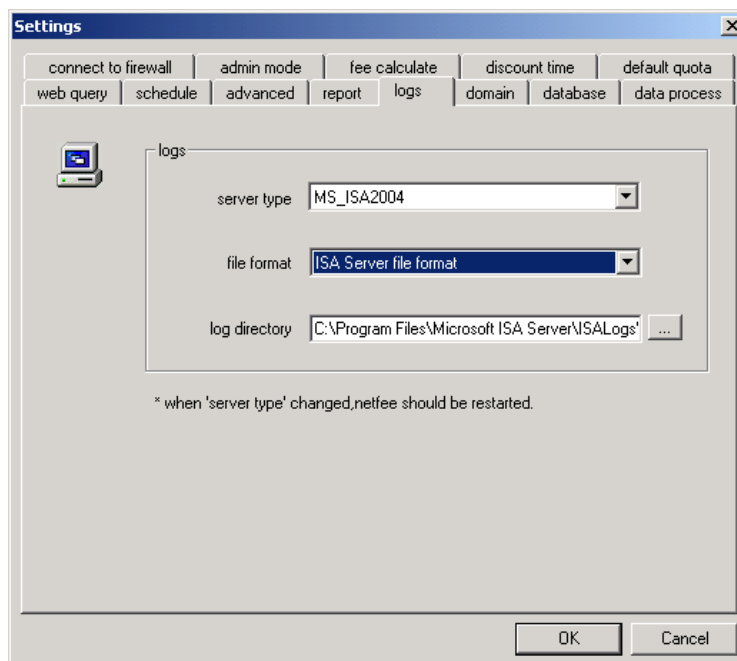


Specify name of computer running ISA server with *computer_name* or IP address. Then specify the name of a user, who will remotely manage the ISA Server computer. Then, type the user name, password, and domain for the user who will remotely manage. Refer to "**6.1 Connect to firewall**".

-  If netfee can't connect ISA server correctly, then the icon  will be shown at low-right corner of screen.

3.5 Log

Run "Tools/Settings/Logs".



Select firewall type. Now netfee can support ISA server 2000/2004, CSM_Proxy、WinProxy5.1、WinRoute6.0

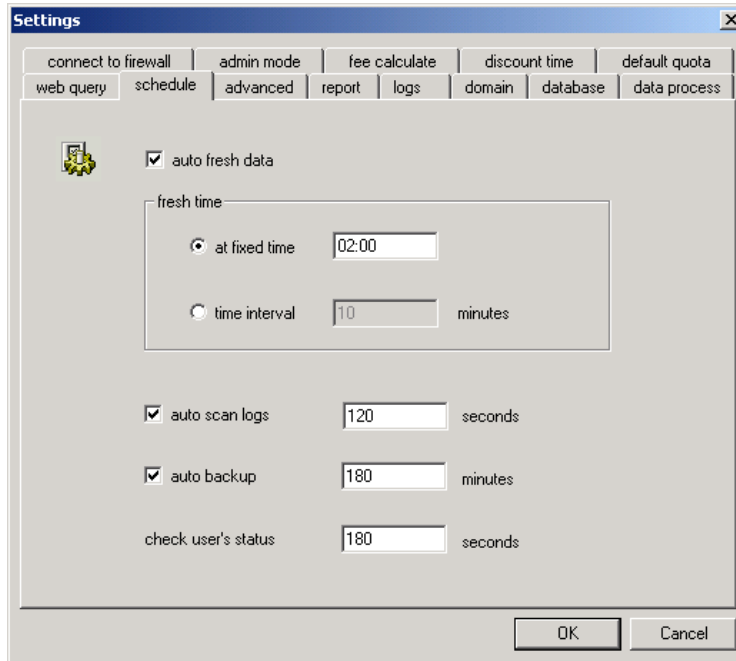
Select the location of log file. If system log file is not in the Local computer, you can find the directory through "network Places". Or The path can be specified in the UNC format. for example, "\\ISAserver\ISALogs\".

Then Select "**ISA Server file format**" or "**W3C extended log file format**" as the format of log files of Firewall.

⊘ For Netfee for ISA server enterprise, must select "ISA Server format" as log file format. E

3.6 Schedule

Run "**Tools/Settings/Schedule**", confirm "**Auto scan data**" is selected.



3.7 Scan log

Run "**Data Process/start Data-scan**" to scan log. you can see users information at "**real-time pane**".

start time	name	source addr	dest addr	protocol	port	application	time used
06-05-13 17:57:41	administrator	192.168.100.1	www.netfeesoftware.com	http	2082	-	00:00:
06-05-13 17:57:33	administrator	192.168.100.1	www.google.com	http	80	-	00:00:
06-05-13 17:56:51	administrator	192.168.100.4	218.30.103.168	pop3	110	msimn.exe	00:01:
06-05-13 17:56:08	administrator	192.168.100.1	blog.platinum.net.cn	http	80	-	00:00:
06-05-13 17:54:16	administrator	192.168.100.1	www.google-analytics.com	http	80	-	00:03:
06-05-13 17:54:14	administrator	192.168.100.1	www.fairyfair.com	http	80	-	00:01:
06-05-13 17:54:13	administrator	192.168.100.1	bbs.chinaunix.net	http	80	-	00:02:
06-05-13 17:54:12	administrator	192.168.100.1	www.chinaunix.net	http	80	-	00:01:

At the same time, you can see log files being scanned.

file name	size M	progress rate
D:\Program Files\Microsoft ISA Server\ISALogs\ISALOG_2...	4.93	Complete
D:\Program Files\Microsoft ISA Server\ISALogs\ISALOG_2...	5.24	Complete

3.8 Fresh data

Run "**Data Process / Fresh data**" (or Ctrl + F5). System process data and write into database.

3.9 Query

Select the user/computer you want to query, click "**Query**", then you can query.